

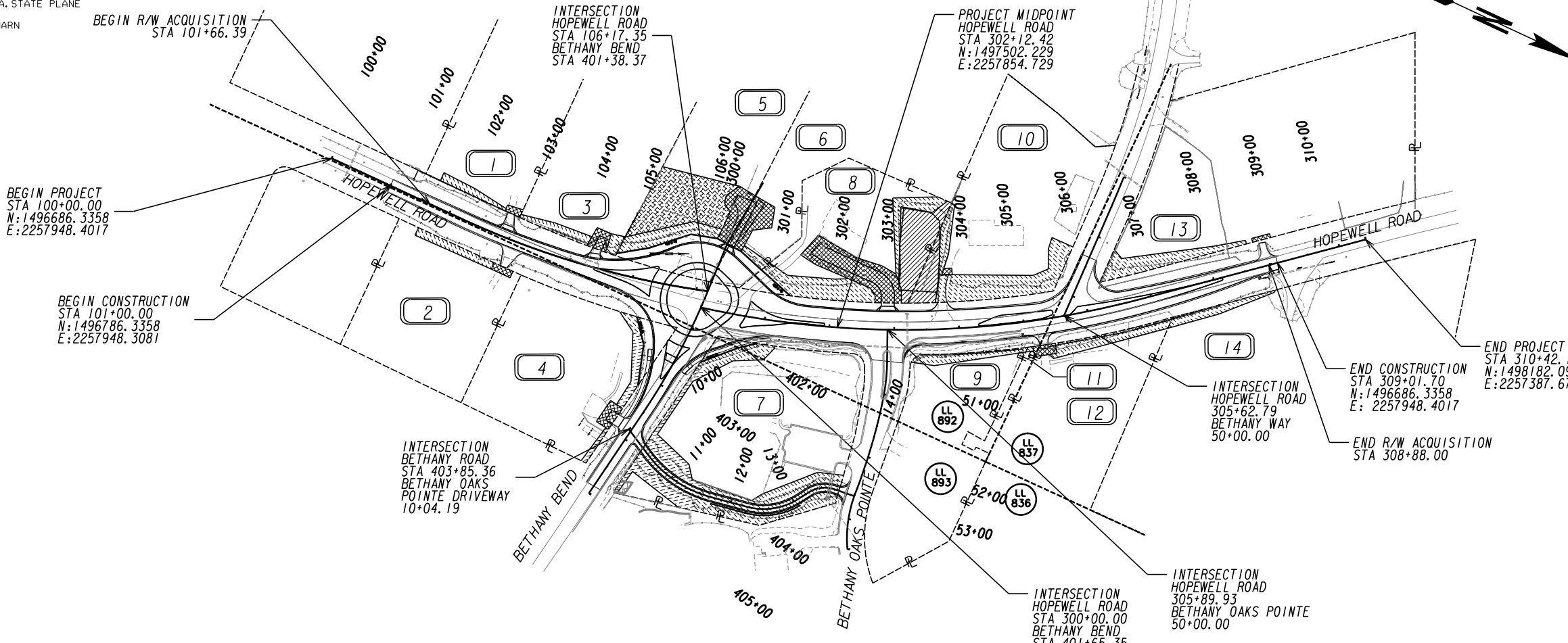
LOCATION SKETCH

CITY OF MILTON PUBLIC WORKS DEPARTMENT

RIGHT OF WAY OF PROPOSED HOPEWELL ROAD AT BETHANY BEND/ BETHANY WAY PROJECT NUMBER M1001

LAND LOT LINE	- - - - -
PROPERTY LINE	— — — — —
RIGHT OF WAY LINE	EXISTING
	REQUIRED
	EXISTING LIMIT OF ACCESS
	REQUIRED LIMIT OF ACCESS
EXISTING LIMIT OF ACCESS & R/W	— — — — —
	— — — — —
REQUIRED LIMIT OF ACCESS & R/W	— — — — —
R/W MARKERS	⊗ ⊗
FENCE	— — — — —

NOTE: THE CO-ORDINATES LISTED ARE WEST ZONE GRID CO-ORDINATES BASED ON THE GA. STATE PLANE CO-ORDINATE SYSTEM OF 1984.
HORIZONTAL DATUM : NAD 1983/94 HARN
VERTICAL DATUM : NAVD 1988



POND
3500 Parkway Lane
Suite 500
Peachtree Corners, Ga. 30092
Phone 678-336-7740
Fax 678-336-7744
Web www.pondco.com

PLANS PREPARED BY _____

UNDER THE SUPERVISION OF _____

OFFICE OF _____ DESIGN

APPROVED: _____
CITY OF MILTON RIGHT OF WAY ADMINISTRATOR DATE

LENGTH OF RIGHT OF WAY PROJECT	HOPEWELL ROAD	BETHANY BEND
	MILES	MILES
NET LENGTH OF RIGHT OF WAY	0.197	0.160
NET LENGTH OF BRIDGES	0.000	0.000
NET LENGTH OF EXCEPTIONS	0.000	0.000
GROSS LENGTH OF RIGHT OF WAY	0.197	0.160



THIS PROJECT IS LOCATED 100% IN FULTON COUNTY AND CONGRESSIONAL DISTRICT NO. 6.

PLANS COMPLETED DATE:	
REVISIONS:	
DRAWING No.	60-0001