



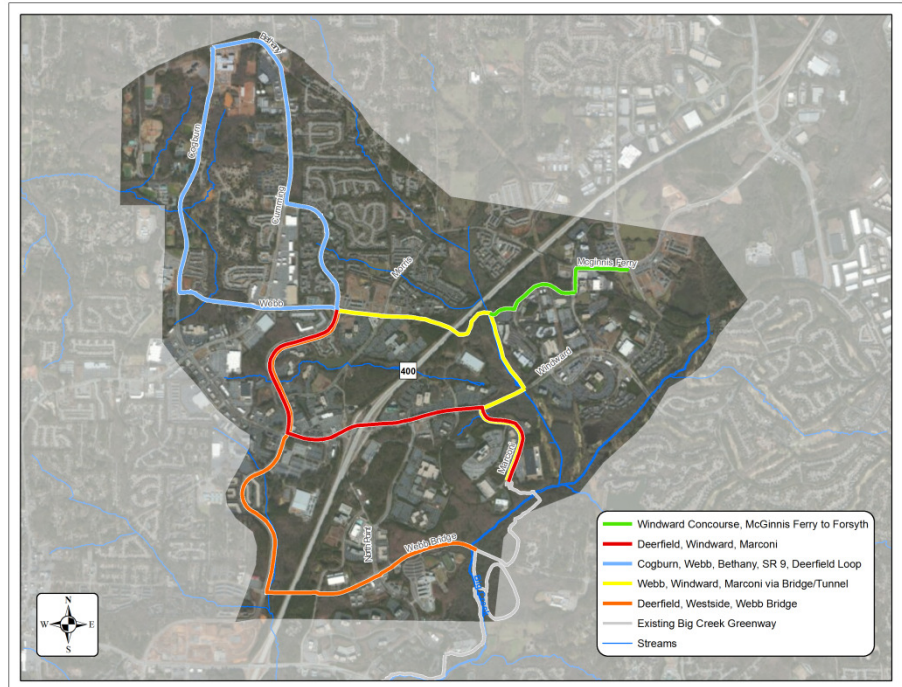
Trail Connection Concept – “Connecting People with Places”

March 2015

The proposed trail connection would be a multimodal trail/greenway connecting the communities of Milton and Alpharetta (utilizing the existing Big Creek Greenway) with the surrounding businesses and neighborhoods. The Cities of Milton and Alpharetta and the NFCID received a grant to study the possible connections from Milton to the Big Creek Greenway system. This joint project was intended to enhance the alternative transportation and recreation options available to citizens, businesses, and visitors to the area. It would provide access to bicyclists and pedestrians for recreational purposes as well as trip making.

Trail Concept

The graphic to the right highlights the potential location and connections for the proposed trail system. The base alignment for the trail was determined based on topography and property lines as well as the creek systems. A proposed tunnel or pedestrian bridge would be constructed across GA 400. The final alignment is subject to change based on the final design phase for the project. Ultimately, there is a desire to connect Webb Road bike/pedestrian facilities to Windward Parkway and Alderman Drive and eventually to the existing Big Creek Greenway.



Trail Design

The trail would be constructed as a 10’ – 12’ wide multiuse path, similar to the figure to the right. It would run adjacent to some existing roadways (i.e., sidepath) as well as through undeveloped areas. The trail would be a hard surface to allow for bicycles as well as pedestrians. Drainage will be designed and accommodated throughout as well.



GA 400

There are two options currently being evaluated for crossing GA 400. A tunnel (picture example in Suwanee, GA) could be construction under GA 400 to accommodate bicycle and pedestrian cross access. The proposed tunnel would be approximately 210 feet in length and provide a 10 foot clearance. A second option would be a pedestrian bridge (picture example below) at 275 - 325 feet in length. The location for this crossing would be between Windward Parkway and McGinnis Ferry Road.

Trail Benefits/Tradeoffs

There are a multitude of issues that need to be addressed as a part of the trail system improvements – design, right-of-way, easements, drainage, access, security, and lighting are just a few. To date, both communities of Milton and Alpharetta and NFCID have had great success implementing similar recreational trail connections. In fact, both communities recognize the true benefits of a healthy community and are committed to helping their citizens and business community stay active and healthy through support for transportation infrastructure and community health programs.



For more information regarding the Trail network and design issues, contact the Project Manager: Sara Leaders, P.E., City of Milton Engineering Department at 678.242.2559 or email at: Sara.Leaders@cityofmiltonga.us

Thank you!